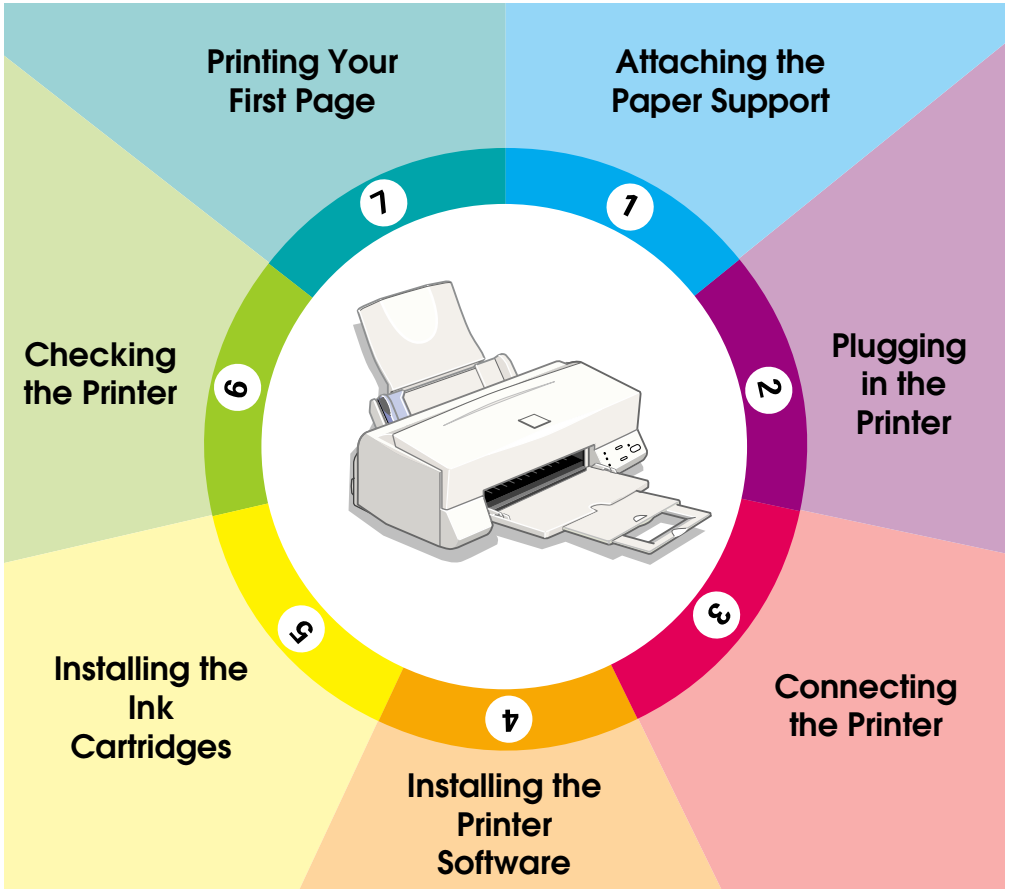


# EPSON

Color Ink Jet Printer

## EPSON STYLUS™ COLOR 660

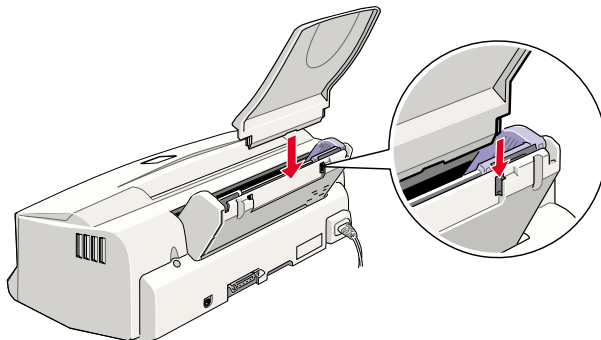


## Setup Guide

1


## Attaching the Paper Support

Insert the paper support into the slots at the rear of the printer.



# 2

## Plugging in the Printer

1. Make sure that the printer is turned off. It is off when the  power button protrudes slightly from the surface of the control panel.
2. Check the label on the back of the printer to make sure the voltage required by the printer matches that of the electrical outlet you will be plugging it into. Also, make sure that you have the correct power cable for your power source.



**Caution:**

*It is not possible to change the printer's voltage. If the rated voltage and your outlet voltage do not match, contact your dealer for assistance. Do not plug in the power cord.*

3. If the power cord is not attached to the printer, connect it to the AC inlet on the back of the printer.
4. Plug the power cord into a properly grounded electrical outlet.

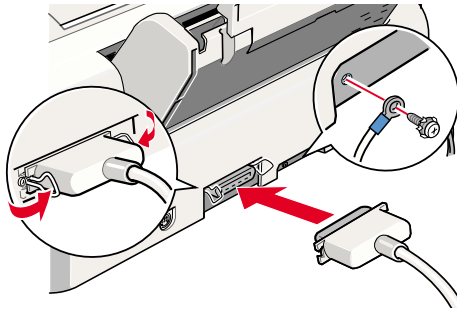
# 3

## Connecting the Printer

### ***Parallel interface for PCs***

To connect the printer to your PC, you need a shielded, twisted-pair parallel cable.

1. Make sure both the printer and computer are turned off.
2. Plug the cable connector securely into the printer's interface connector. Then squeeze the wire clips together until they lock in place on both sides. If your cable has a ground wire, connect it to the ground connector below the interface connector.



3. Plug the other end of the cable into the computer's parallel interface. If there is a ground wire at the computer end of the cable, connect it to the ground connector at the back of the computer.

### ***USB interface for PCs and Macintosh***

By using a USB conversion cable it is possible to establish a connection between the computer's USB interface and the printer's parallel interface. Refer to the USB User's Guide supplied with the USB conversion cable for details on the connection method.

#### ***Note:***

- ❑ *To connect your printer to the USB interface on your computer, you must purchase a conversion cable.*
- ❑ *A USB connection is only possible with Windows 98 pre-installed PCs, and with iMac and G3 series Macintosh computers.*

# 4

## Installing the Printer Software

After connecting the printer to your computer, you need to install the software included on the “Printer Software for EPSON Stylus COLOR 660” CD-ROM shipped with your printer.

Your printer software includes:

- ❑ **Printer driver**  
The printer driver is the software that runs, or “drives,” your printer. With it, you can make settings such as print quality, speed, media type, and paper size.
- ❑ **Utilities**  
The Nozzle Check, Head Cleaning, and Print Head Alignment utilities help you keep your printer in top operating condition.
- ❑ **EPSON Status Monitor 3**  
EPSON Status Monitor 3 notifies you of printer errors and displays printer status information such as the amount of ink remaining. The Status Monitor also guides you when replacing ink cartridges.
- ❑ **Online Guides**  
The online *Reference Guide* and *Color Guide* help you learn more about your printer and color printing.

If you are using the floppy disk version of the software, make a backup copy of the EPSON printer software disk before you begin installation. If you wish to make a floppy disk version of the printer software on your CD-ROM, you can use the driver disk creation utility included on the CD.

### ***Installing in Windows***

1. Insert the printer software CD shipped with your printer in the CD-ROM drive. The Installer dialog box appears. (For floppy disk users, insert the disk in a disk drive, double-click the My Computer icon and then double-click the floppy disk drive icon and then Setup.exe)
2. Click Install to start the printer software installation.
3. When the installation is complete, click OK.

#### ***Note:***

*If the New Hardware Found screen or any other Wizard appears when you turn on your computer, click CANCEL and follow the steps above.*

## Installing in Windows for USB interfaces

When the optional USB conversion cable is connected, the EPSON USB printer driver and printer software contained in the CD-ROM supplied with the printer cannot be used. Instead, install the EPSON USB printer driver and printer software supplied with the USB conversion cable. The method of installation is the same; however, refer to the USB User's Guide supplied with the USB conversion cable for further details.

## Installing in Macintosh



### Caution:

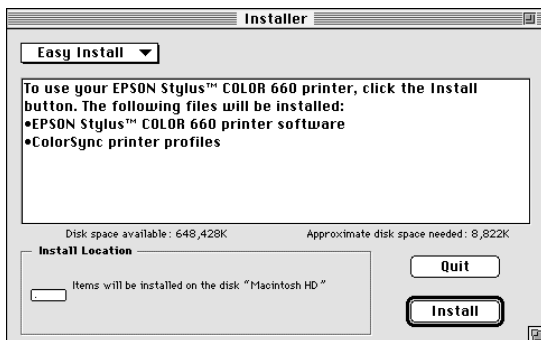
*Turn off all virus protection programs before you install your printer software.*

### Note:

*To connect your printer to the USB interface on your Macintosh, you must purchase a conversion cable.*

Follow these steps to install your printer software.

1. Turn on your Macintosh and insert the software CD in the CD-ROM drive.
2. The EPSON printer software disk opens automatically.
3. If a single Installer icon appears, double-click the icon. If separate folders containing installer icons for several languages appear, double-click the folder for your preferred language, then double-click the Installer icon inside it.
4. After the initial screen appears, click Continue. The following dialog box appears.

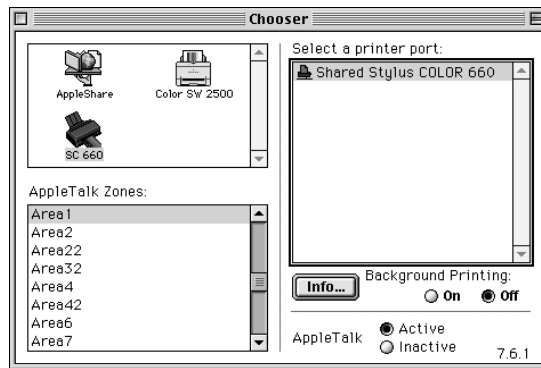


5. To install all of the printer software included on your printer software CD-ROM, make sure the Install Location box displays the correct disk drive and click Install.
6. If you are low on disk space, select Custom Install from the pop-up menu and click Network Driver Package and Epson Namer (if you connect the printer to your Macintosh over an AppleTalk network). Confirm the destination for installation, then click Install.
7. When a message appears informing you that the installation is finished, click Restart to complete the installation and restart your computer.

### ***Selecting your printer in the Chooser***

After you have installed the printer software, you need to open the Chooser to select your printer. You have to choose the printer the first time you use it or whenever you want to switch to another printer. Your Macintosh will always print using the last printer selected.

1. Choose Chooser from the Apple menu. Then click your printer's icon and the port your printer is connected to.



2. Click the Background Printing radio buttons to turn background printing on or off.

When background printing is on, you can use your Macintosh while it is preparing a document for printing. In order to use the EPSON Monitor3 utility to manage print jobs, background printing must be turned on.

3. Close the Chooser.

# 5

## Installing the Ink Cartridges

Before installing the ink cartridges, note the following.



### Warning:

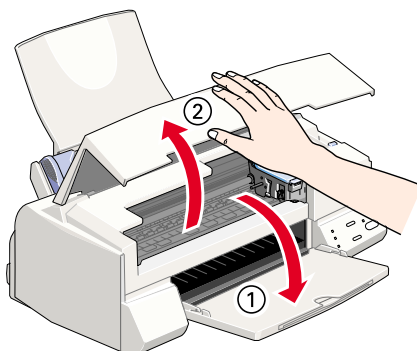
*The ink cartridges are self-contained units. Under ordinary use, ink will not leak from a cartridge. If ink does get on your hands, wash them thoroughly with soap and water. If ink gets into your eyes, flush them immediately with water.*


### Note:

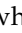
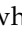

*Do not open the ink cartridge packages until just before you install them, or the ink may dry up.*

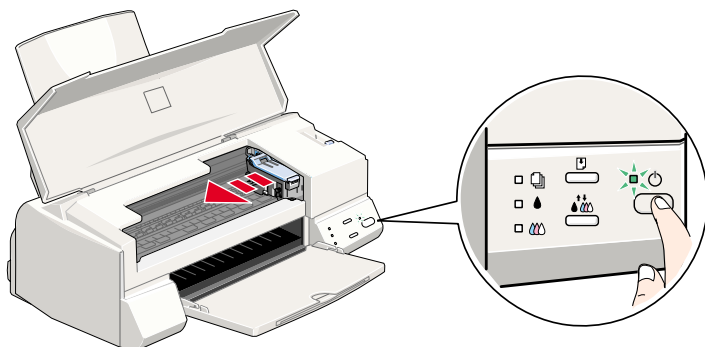
Install the ink cartridges as follows:

1. Lower the output tray; then open the printer cover.



2. Turn on the printer by pressing the  power button.

The print head moves slightly to the left, which is the ink cartridge installation position. The  power light flashes and the  and  ink out lights come on.



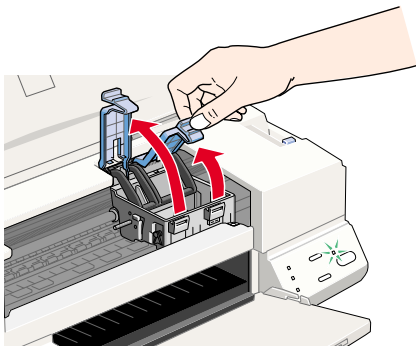




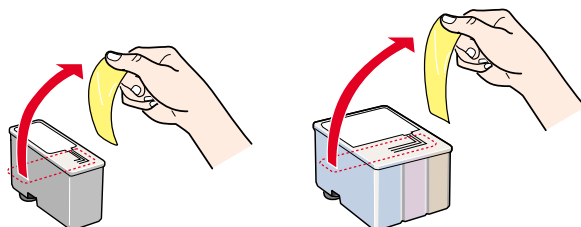
**Caution:**

*Do not move the print head by hand. Otherwise you may damage the printer.*

3. Lift up the ink cartridge clamps.



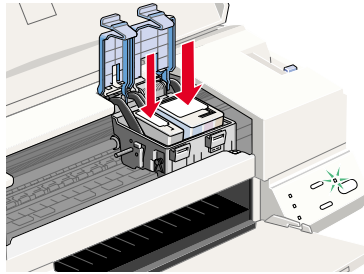
4. Open the ink cartridge packages. Next, remove only the yellow tape seals from each cartridge.



**Caution:**

- Remove the yellow tape seals from the cartridges before installing them; otherwise, the cartridges may become unusable.*
- Do not remove the blue portion of the tape seals from the cartridges; otherwise, the cartridges may become clogged and unable to print.*
- Do not remove the tape seals from the bottom of the cartridges; otherwise, ink will leak.*

5. Place the cartridges gently into their holders with the labels facing up. The color ink cartridge, which is larger, goes on the right and the black goes on the left. Do not press down on the cartridges.



**Note:**


*Install both ink cartridges. If either of the cartridges is not installed, the printer will not work.*

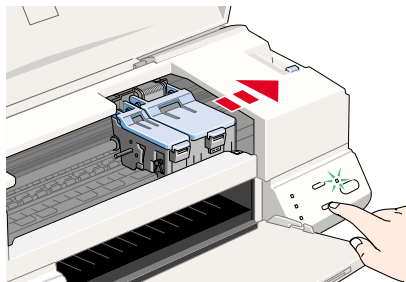
6. Press the ink cartridge clamps down until they lock in place.





**Caution:**

*Once you install the ink cartridges, do not open their clamps again until you replace the ink cartridges; otherwise, the cartridges may become unusable.*

7. Press the  cleaning button. The printer moves the print head and begins charging the ink delivery system.



While the ink is charging, the  power light flashes and the printer produces a variety of mechanical sounds. These sounds are normal. When the ink delivery system has been charged, the print head returns to its home (far right) position and the  power light comes on.



**Caution:**

*Never turn off the printer while the  power light is flashing.*

8. Close the printer cover.

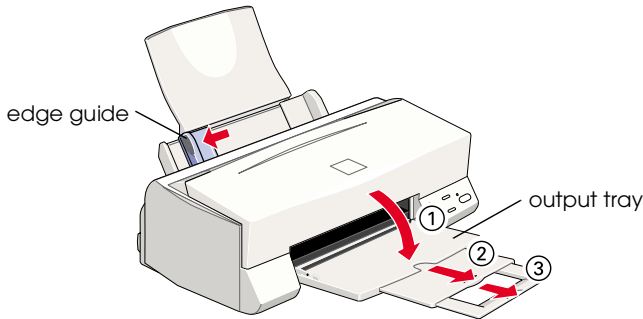
# Checking the Printer

Before printing your first page, you need to make sure the printer is working correctly by printing a nozzle check page and, if necessary, cleaning the print head.

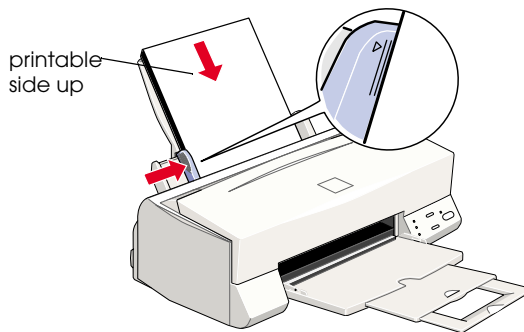
## Loading paper

Follow these steps to load plain paper in the printer.

1. Lower the output tray and slide out the extension. Next, slide the left edge guide so that the distance between the edge guides is slightly wider than the width of your paper.




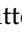
2. Fan a stack of paper; then tap it on a flat surface to even the edges.
3. Load the stack of paper with the printable side up and the right edge of the paper resting against the right side of the sheet feeder. Then slide the left edge guide against the left edge of the paper.

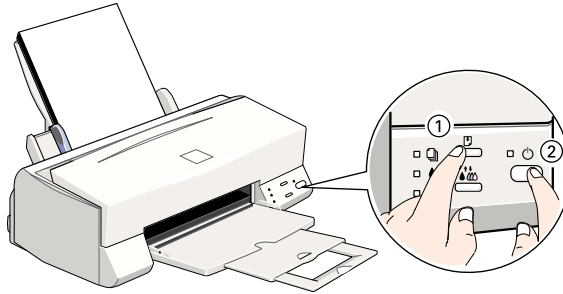


### Note:

- ❑ Always load paper into the sheet feeder short edge first.
- ❑ Make sure the paper stack fits under the arrow mark inside the edge guide.

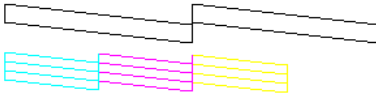
## Checking the print head nozzles

Hold down the  load/eject button (① in the illustration below) and press the  power button (② in the illustration below) to turn on the printer. Then release both buttons.

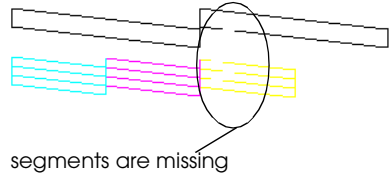


Here are sample printouts.

Good sample







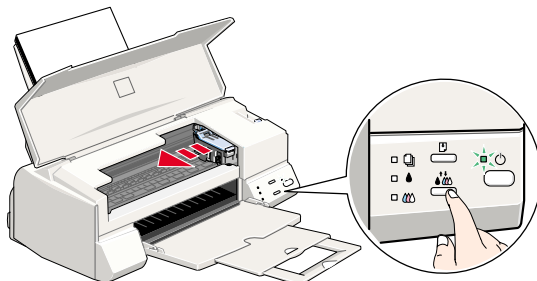
Print head needs to be cleaned




If the nozzle check page does not print satisfactorily (for example, if any segment of the printed lines is missing), then you should clean the print head as explained below. If the printout was satisfactory, you are ready to print your first page. See “Printing Your First Page” for instructions.

## Cleaning the print head

1. Make sure that the  power light is on and that both the  black and  color ink out lights are off.
2. Hold down the  cleaning button for three seconds.




The printer starts cleaning the print head and the  power light begins flashing. Print head cleaning takes about one minute to complete.



### **Caution:**

*Never turn off the printer while the  power light is flashing. Doing so may damage the printer.*

3. When the  power light stops flashing, print a few lines from a document to confirm that the head is clean and to reset the cleaning cycle.

If print quality hasn't improved after repeating the nozzle checking and cleaning procedures four or five times, contact your dealer.

# 7

## Printing Your First Page

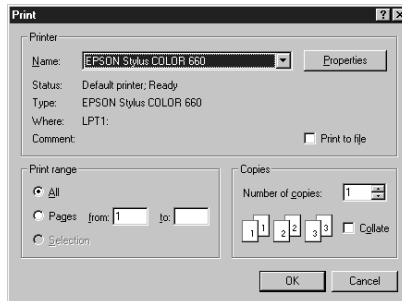
After making sure your printer is operating correctly, you are ready to print your first page. To familiarize yourself with the printer software, we recommend printing one of the sample files provided with your printer software. Follow the instructions for Windows or Macintosh in this section.

If you choose to print your own document instead, select the appropriate Paper Size setting in your application software, then print the document as explained from step 3, below. (See your software manual for details on how to use your application.)

### For Windows

Follow these steps to print the sample file.

1. Make sure A4 or Letter size EPSON Photo Quality Ink Jet Paper is loaded in the printer.
2. Insert the printer driver CD-ROM, then open the sample.bmp file.
3. To change the printer driver settings, open the File menu and select Print. The Print dialog box appears. (This example is from Paint).



4. Make sure your printer is selected and then click Properties. The printer driver appears.



5. Click the Main tab, then click anywhere in the Media Type box and select Photo Quality Ink Jet Paper.



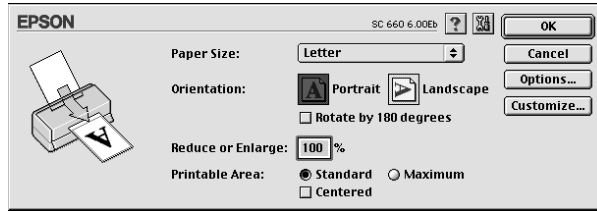
6. Select Color as the Ink setting.
7. Make sure Automatic is selected as the Mode setting.  
When Automatic is selected, the printer software optimizes other settings according to the Media Type and Ink settings you make.
8. Click the Paper tab, then click anywhere in the Paper Size box and select the paper size you loaded in the printer.
9. Click OK at the bottom of the window. You return to the Print dialog box (or a similar dialog box).
10. Click Close, OK, or Print to print. You may need to click a combination of these buttons.


While printing, the EPSON Progress Meter will appear, showing the printing progress and the status of your printer.

## For Macintosh

Follow these steps to print the sample file.

1. Make sure A4 or Letter size paper is loaded in the printer.
2. Insert the printer software CD.
3. Open the EPSON folder and double-click the README file.
4. Choose Page Setup from the File menu. The following dialog box appears.

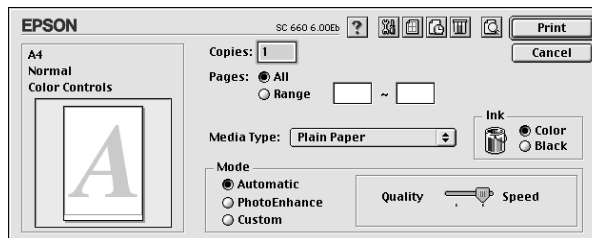


5. Select the paper size you loaded in the printer from the Paper Size list.
6. Select  Portrait as the Orientation option.
7. After making your settings, click OK to close the Page Setup dialog box.

### **Note:**

*You cannot print from the Page Setup dialog box. You can only print from the Print dialog box.*

8. Choose Print from the File menu. The Print dialog box appears.



9. Select Plain Paper from the Media Type list.
10. Select Color as the Ink option.
11. Make sure Automatic is selected as the Mode setting.

When Automatic is selected, the printer software optimizes other settings according to the Media Type and Ink settings you make.

12. Click Print to start printing.